

“Remember as you go about your day that you may be the only Jesus some of your friends, neighbors, and family will ever see.”  
— Wanda E. Brunstetter

## Christmas Tickets Online Nov. 12!!

Our 14 annual production of “Christmas” will be held on Saturday Dec. 8<sup>th</sup> at 6:30pm and Sunday Dec. 9<sup>th</sup> as 2:30pm. It’s a show for family, friends, and community.

Our Christmas production is our biggest community ministry production of the year. Typically we reach over a thousand people through our dance ministry. This year, it is our goal to leave no stone unturned, and fill every seat for every show with all eyes on His Word.

We are selling tickets online this year, and will be available beginning **Nov. 12<sup>th</sup> at 12:00A.M.** Tickets are \$12.75 and all seating is assigned.

Please call if you need handicap seating. Tickets will go offline at 12:00 A.M. the day of the show, however, tickets will be available at the shows ticket booth.

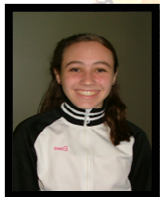
**To purchase tickets, and see a free preview online, go to [www.mmdco.org](http://www.mmdco.org)**

## We’re Proud of You!

In front of a crowd of 300 at Walled Lake Central High School, Dance Team member Emma Green moved an audience with her Lord-inspired

lyrical dance performance to the Women’s Choir rendition of, “Will there Really be a Morning”, choreographed by Ms. Lei..

Congratulations on being selected and on an outstanding performance that moved the crowd to feel the Holy Spirit through your dance.



## Snow Days

Snow days will be based on conditions at class time, not if the schools close. Please check the website or call the studio at 1pm to find out if classes are cancelled.

## Thanksgiving break

We will not be holding classes Wednesday November 21-Saturday November 24<sup>th</sup>. Classes will resume on Monday November 26.

## T-Shirt Design Contest

Congratulations to Jenna Quinn, the young designer that inspired the concept of the 2012 T-shirt. Thank you to all the fantastic entries. You are all blessed with wonderful creativity and we thank you for participating!

## Recital Information

**June 8, 2013** is this year’s date for the recital. Thank you to everyone that has already submitted their recital registration forms at the front desk to let us know if their child is performing. If you have not submitted your form, or don’t remember getting the information, please talk to someone at the front desk, these need to be turned in right away. You can also download the form from our website under the login tab.

## Calendar

- Nov 12: Christmas Show Tickets go on sale online
- Nov 21-25: No Class (Thanksgiving Break)
- Nov. 21: Youth Ballet Theatre Reads Story and Performs Nutcracker excerpts at Highland Library
- Dec. 8 & 9: Christmas Production
- Dec. 15: MMDCo teams performs at Milford YMCA
- Dec. 24 – Jan. 5 – No Class (Winter Break)

## AutoPayment LIVE!

If you have opted into auto payment in your online account, withdrawals will be made monthly between the 1-10<sup>th</sup>. There are no additional CC fees incurred.

## Lice! ‘Tis the season

So far this year we are in the clear, no incidents have been reported to us. We do, however, like to stay informed. We ask that you please keep your child’s hair pulled back in a tight pony or bun, and do not share hair brushes. Also, weekly checks for bug bites along the hairline and around the ears are helpful. If you want more information, feel free to talk to us at the front desk.

## The Messenger

Dear Dancers and Families,

Thank you for another wonderful month of effort, improvement and fellowship. This month I wanted to leave you with my thoughts on this month’s quote.

The most important calling each Christian has, is to be the hands and feet of Christ as you go about your daily business. You should know that the task at hand has the potential to make an eternal impact on those around you! The cares of this world are fleeting, but the impact we make on another person’s spirit has an eternal value that will surpass all things!

Have a wonderful month!  
Warm Blessings,  
Miss Hollie

**PARKING NOTE:** Please do not park in the first 3 spaces near Marcos Pizza. These are used by Marcos drivers. Thank you!